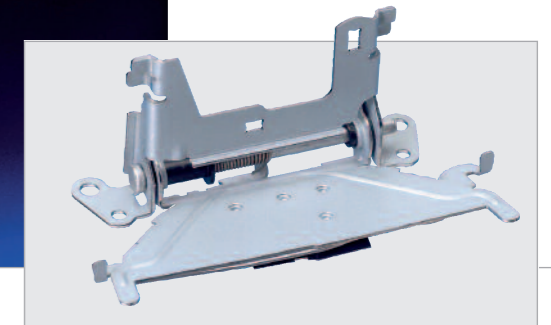


# Assemblies



## Extreme flexibility and peak quality: ISO/TS 16949:2002

In the "Assemblies" division, precision and flexibility are a must. The highest quality is achieved in accordance with ISO/TS 16949:2002. That is why Oskar Rüegg, in addition to the production of punch-bending parts, offers automatic and manual production of assemblies. Through a combination of Swiss know-how and Bulgarian assembly capability, prices remain competitive – even for a large number of versions – while Oskar Rüegg's well-known quality and due-date reliability remain consistently high.

Automatic assembly in a punch-bending tool or a rotary-table machine is carried out in Switzerland, while tool-supported or manual assembly is executed in Oskar Rüegg's new production plant in Bulgaria.

Oskar Rüegg knows how to produce your order fast and perfect.

Take our word for it.

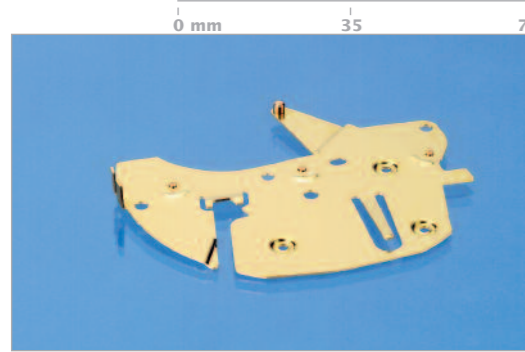
### METAL MOLDED PARTS

- Automotive  
Infotainment  
Lighting  
Interior Solutions  
Connectors/Shieldings  
Motormanagement
- Building/Lighting
- Electronics/Connectors

### ASSEMBLING GROUP

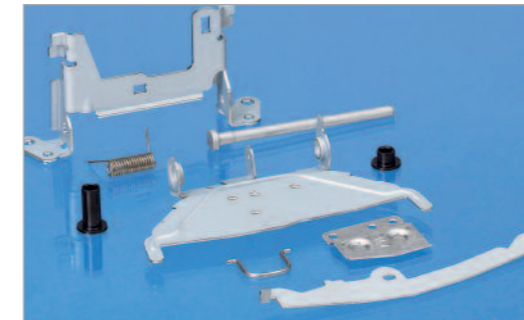
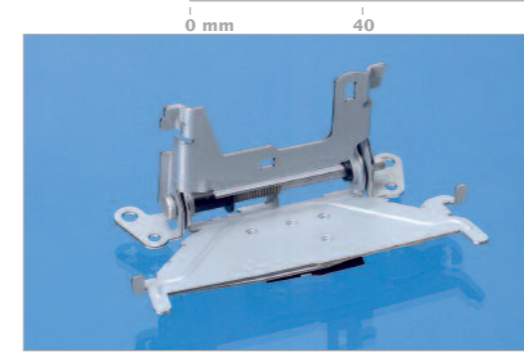
- **Assemblies**

### Fully automatic assembly by punch-bending tool



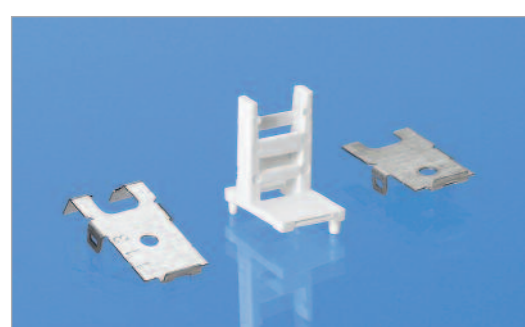
Application	Digital recording speedometer for commercial vehicles
Annual quantity	1,200,000 units
Manufacturing process	Follow-on composite tool with an integrated fitting tool to assembly 4 bolts during the stamping process
Advantages	<ul style="list-style-type: none"> <li>- low processing costs</li> <li>- high availability</li> <li>- high process reliability</li> <li>- short throughput time for large series</li> <li>- completed parts in one production process</li> </ul>
Possible additional processes	<ul style="list-style-type: none"> <li>- quality control by demand</li> <li>- individual function and quality controls</li> <li>- measurement checks</li> <li>- fully automatic "vision" checks</li> <li>- software-based analyses</li> <li>- etc.</li> <li>- codification of parts</li> <li>- customer-specific packaging</li> <li>- e.g. in correct position in trays</li> </ul>

### Manual tool-supported assembly



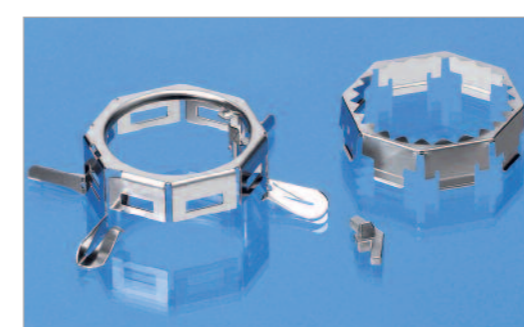
Application	Shield, front headlamp
Annual quantity	2,500,000 units in different versions
Manufacturing process	tool-supported manual assembly
Advantages	<ul style="list-style-type: none"> <li>- low initial costs</li> <li>- high flexibility</li> <li>- high process reliability</li> <li>- several versions can be manufactured simultaneously</li> <li>- ideal for all quantities and high diversity of versions</li> </ul>
Possible additional processes	<ul style="list-style-type: none"> <li>- quality control by demand</li> <li>- individual function and quality controls</li> <li>- measurement checks</li> <li>- visual sight checks</li> <li>- etc.</li> <li>- customer-specific packaging</li> <li>- e.g. in correct position in trays</li> </ul>

### Fully automatic assembly in a rotary-table machine



Application	Sensor BG, car communication system
Annual quantity	4,200,000 units in different versions
Manufacturing process	assembly by means of a rotary-table machine
Advantages	<ul style="list-style-type: none"> <li>- low processing costs</li> <li>- high availability</li> <li>- high process reliability</li> <li>- short throughput time for large series</li> <li>- completed parts in one production process</li> </ul>
Possible additional processes	<ul style="list-style-type: none"> <li>- quality control by demand</li> <li>- individual function and quality controls</li> <li>- measurement checks</li> <li>- fully automatic "vision" checks</li> <li>- software-based analyses</li> <li>- etc.</li> <li>- codification of parts</li> <li>- customer-specific packaging</li> <li>- e.g. in correct position in trays</li> </ul>

### Manual tool-supported assembly



Application	Bulb socket, front headlamp
Annual quantity	2,500,000 units in different versions
Manufacturing process	tool-supported manual assembly
Advantages	<ul style="list-style-type: none"> <li>- low initial costs</li> <li>- high flexibility</li> <li>- high process reliability</li> <li>- several versions can be manufactured simultaneously</li> <li>- ideal for all quantities and high diversity of versions</li> </ul>
Possible additional processes	<ul style="list-style-type: none"> <li>- quality control by demand</li> <li>- individual function and quality controls</li> <li>- measurement checks</li> <li>- visual sight checks</li> <li>- etc.</li> <li>- customer-specific packaging</li> <li>- e.g. in correct position in trays</li> </ul>